

KC HOWE NEWS

HELPING THEM TO PLAY & LEARN

I am writing this as the wind blows in cooler weather to start our first full week of fall. It seems like the school year just began, on a hot and sticky August day, when children, parents, and staff were each still uncertain of what the year would bring. But now, just a few short weeks later, your children have become more confident in their behavior, sure of daily routines and willing to make new friends and try new things. You, their parent, are getting used to new drop-off, pick-up and sign-in procedures, learning to navigate the abundance of emails and notices that come with the start of a new school year, and providing strong support to your children. Staff have been working hard to familiarize themselves with the individual personality traits and specific strengths of each child and are using that information to help them develop the skills needed to work with and make new friends. There is so much fun to be had with developmentally appropriate activities in art, drama, sports, science, math and language arts, as well as community building events and service projects. We have been promoting STEAM activities and using teaching methods that enrich and complement the kindergarten experience. Stop in anytime to get a feel for how your child spends their day.

--Miss Georgeanne



Play is often talked about as if it were a relief from serious learning. But for children play is serious learning. Play is really the work of childhood.

-Fred Rogers

UPCOMING KC THEMES

9/26-9/30

SCHOOL SPIRIT

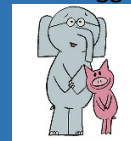
Wear Blue and Gold to support LEBO on Friday, 9/30/22

10/3-10/7

AUTHOR STUDY:

MO WILLEMS

See the Parent Table to vote for your favorite Elephant & Piggie book



10/10-10/14

FALL FUN

Leaf Challenge: Bring in the **smallest** leaf you can find



10/17-10/21

CAREER WEEK

See a staff member to schedule a time to stop in and tell us about your career

10/24-10/28

DOWN ON THE FARM

Cows in the Classroom with Turner Dairy on Monday, 10/24/22

UPCOMING LONG DAYS

Mt. Lebanon Schools will be closed on Wednesday, **10/5/22** and Monday, **10/10/22**. KC Howe is offering Long Day Care at the KC Hoover Center for families who have pre-registered.

WALK TO COUNTRY CLUB PARK

Weather permitting, we will be walking to Country Club every Friday, from 9:30-11:00 AM and 1:15-3:00 PM. Children should wear closed toe shoes and appropriate clothing for outdoor play.

KC HOWE NEWS

SEPTEMBER, 2022

DATES TO REMEMBER

- 10/5:** Yom Kippur: Schools Closed—MLEDP open for those registered for the Long Day
10/7: District Act 80 Day: Kindergarten in Session—KC Howe Regular Schedule
10/10: Teacher In-Service: Schools Closed-MLEDP open for those registered for the Long Day
10/24-28: Sign-ups for November 8, 2022 Long Day
11/8: Election Day: Schools Closed-- MLEDP open for those registered for the Long Day

GETTING TO KNOW OUR STAFF



Miss Georgeanne (CD) began her career in environmental protection but switched fields after starting her family and has worked in childcare and elementary education for over 30 years. This is her fourth year as a Kindergarten Care Center Director with MLEDP and she is excited to be working at the new KC Howe Center. She is committed to providing children with a nurturing and enriching environment that fosters intellectual curiosity and encourages them to explore new concepts. Miss Georgeanne has two grown sons who live out of state, and spends her free time hiking, biking, traveling, and reading.

Mrs. Simon (AM) has a BA in Child Development/Family Relations from IUP and has worked with MLEDP for over 23 years. She loves working with children and listening to their daily stories. She also enjoys watching them make friends and seeing the bonds grow between them throughout the year. Mrs. Simon has two teenage daughters who **Rock her World**, and loves watching them play soccer—this year they are playing together on their school's varsity team. **Go Eagles!**

Miss Linda (AM) graduated from Duquesne University with a BS in Elementary Education and taught for 30+ years within the Diocese of Pittsburgh. This is her second year with MLEDP. In addition to teaching, she loves spending time with her adult children (daughter & son), her 3 adopted dogs (Duke, Zoey, & Charley), gardening, cooking, and listening to music.

Ms. Haley (PM) graduated from the University of Pittsburgh with a MS in Developmental Psychology, and this is her first year with MLEDP. She loves seeing how children's minds grow as they learn and start to play and work together. Ms. Haley enjoys reading,

taking care of her “kitchen garden”, learning new things, and exploring. Her family lives on a small farm in Georgia so she always has a funny story to tell about them!

Ms. Sue (Midday) graduated from California University of PA with a BA in Psychology and a MEd in Secondary School Counseling. She has over 15 years of experience in school counseling and childcare. She enjoys advocating for children and providing them with a nurturing environment. Ms. Sue likes to spend time with her family and friends, hang out at the beach, garden, and travel.

Ms. Christie (PM) graduated from Slippery Rock University with a BS in Elementary Education and a specialization in Early Childhood Education. She taught for 15+ years in a private school, teaching 2nd & 3rd grade and Transitional Preschool. She has been working with MLEDP for 4+ years and has worked with the School Age Program as well as Kindergarten Care. Ms. Christie loves working with children and watching them progress and develop. She also thinks that they are very funny! In her free time Ms. Christie enjoys spending time with her family, hiking, eating, and attending concerts with her husband, brother, and friends.

KC HOWE NEWS

SEPTEMBER, 2022

FOR YOUR CHILD'S SAFETY

- Please remember to bring your ID for every pick-up and remind each pick-up person to have ID available. This is necessary throughout the school year. In the event of staff absences, there may be substitute staff present who have not met you before, and they will need to see your ID before releasing your child.
- It is vital that you inform us of any changes to your child's schedule. If your child will not be attending KC Howe for any reason, please leave a note in the Parent Log located in the Parent Area, call us at 412-207-9016, or email us at kchowe@mledp.org. Notifying the kindergarten teacher or your child's school is not an acceptable means of notifying us. There is a \$25 Failure to Call-off fee if you do not inform us that your child will be absent.



KINDERGARTEN CARE BUS RULES

Many of our children travel to or from our center on a school bus. We review bus safety with them, and they are working hard to follow safe bus practices. We would appreciate it if you would also reinforce the following Bus

MLEDP COVID-19 POLICY

If your child tests positive for COVID 19, please follow the steps below:

1. Complete the MLEDP COVID 19 reporting form here: <https://mledp.org/parent-resources/covid-19> reporting
2. Submit a note from your doctor or the school nurse stating the date that your child can return to school and/or childcare.
3. Keep your child home until the date stated on the note from your doctor or the school nurse.
4. When your child returns to care they should wear a mask for an additional 5 days.

For additional information, please see the MLEDP COVID 19 health and safety plan here: <https://mledp.org/parent-resources/mledp-covid-health-and-safety-plan>